

REF 2014: Unit of assessment summary data

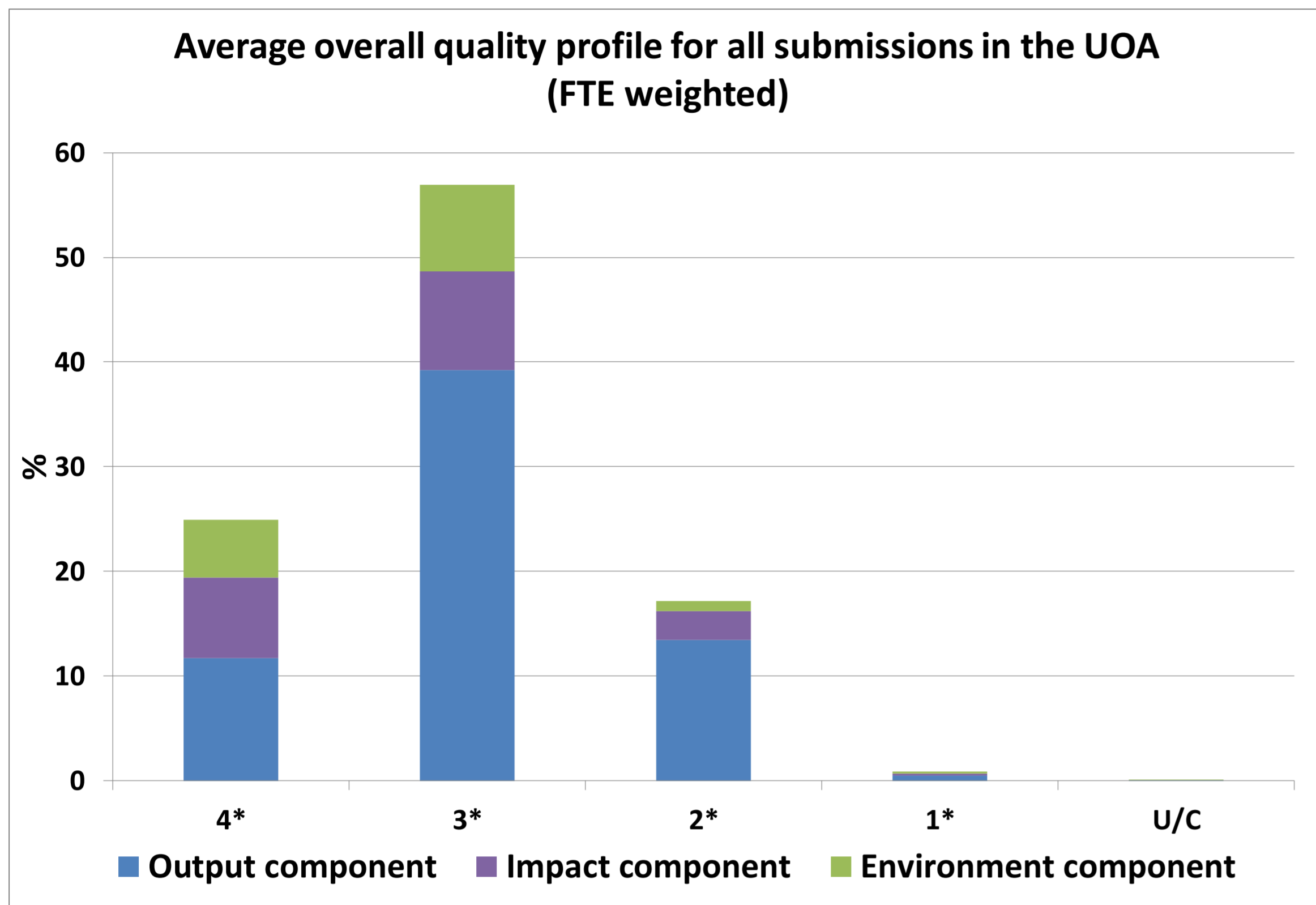
UOA 12: Aeronautical, Mechanical, Chemical and Manufacturing Engineering

Submission information

Number of submissions	25
Category A FTE staff submitted	1,152
Headcounts of category A and C staff submitted	1,192
Headcounts of early career researchers (REF1a)	248
Number of outputs submitted	4,154
Number of case studies submitted	138

Doctoral research degrees awarded				
2008-09	2009-10	2010-11	2011-12	2012-13
669	687	729	731	719

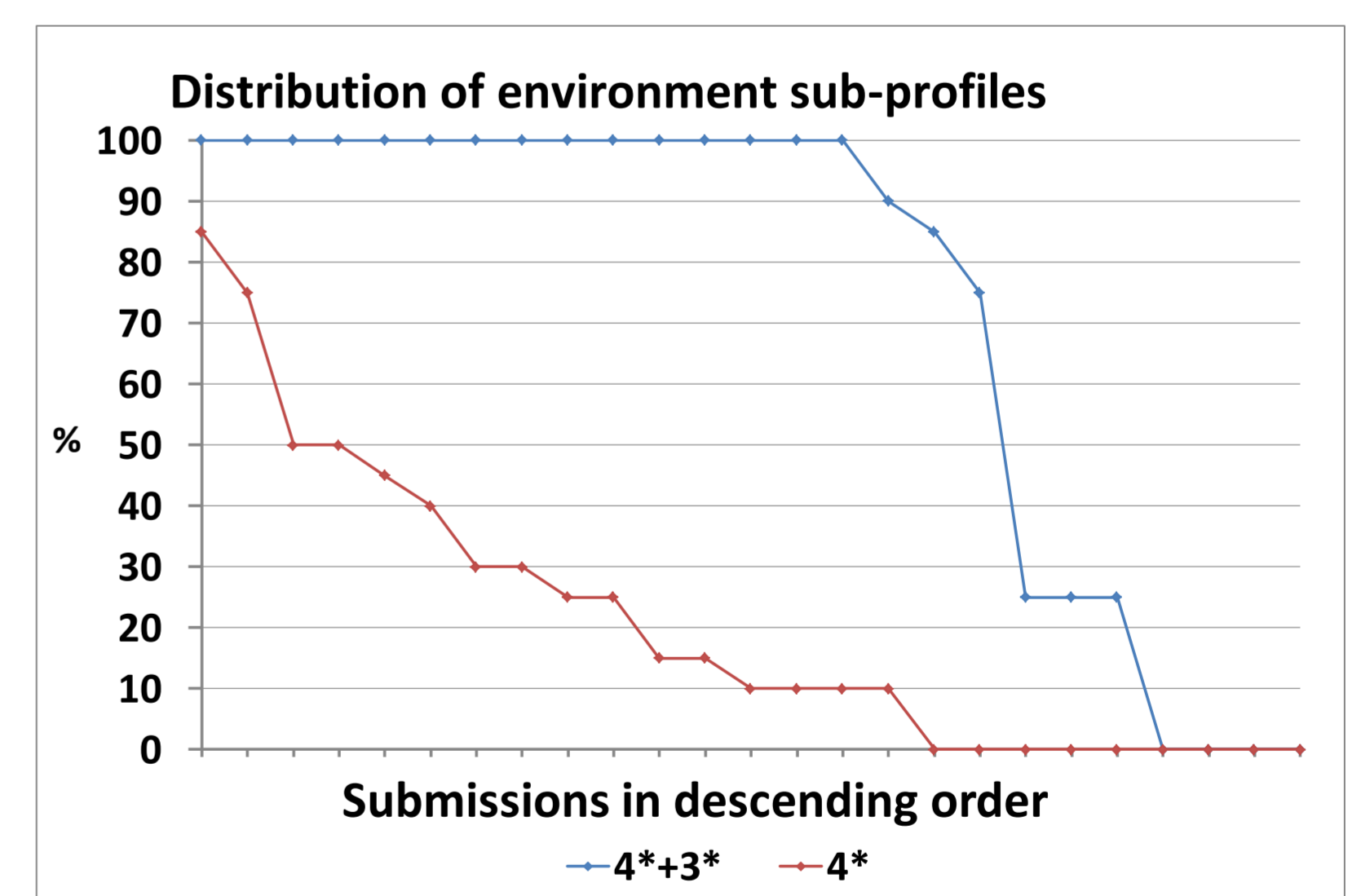
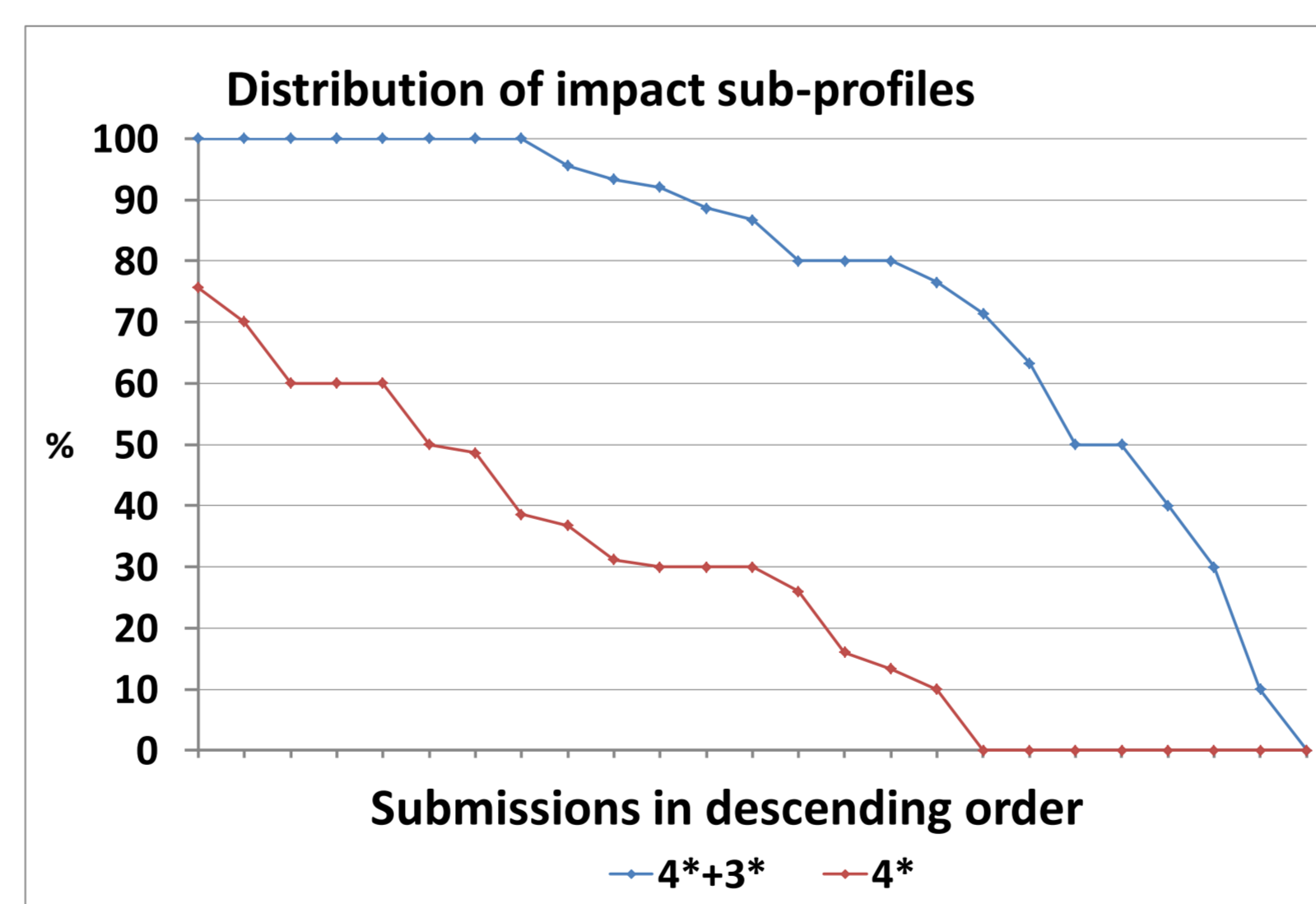
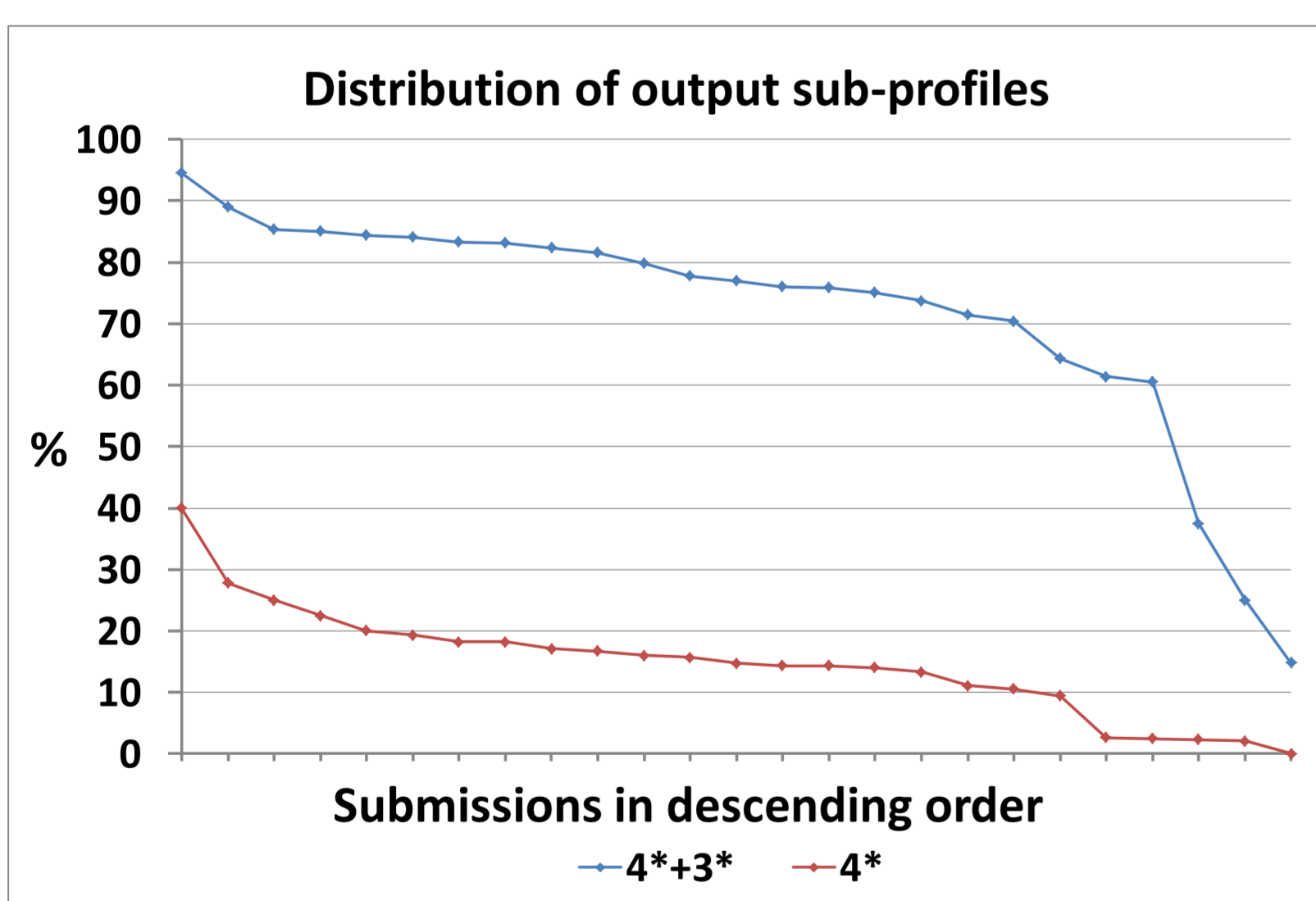
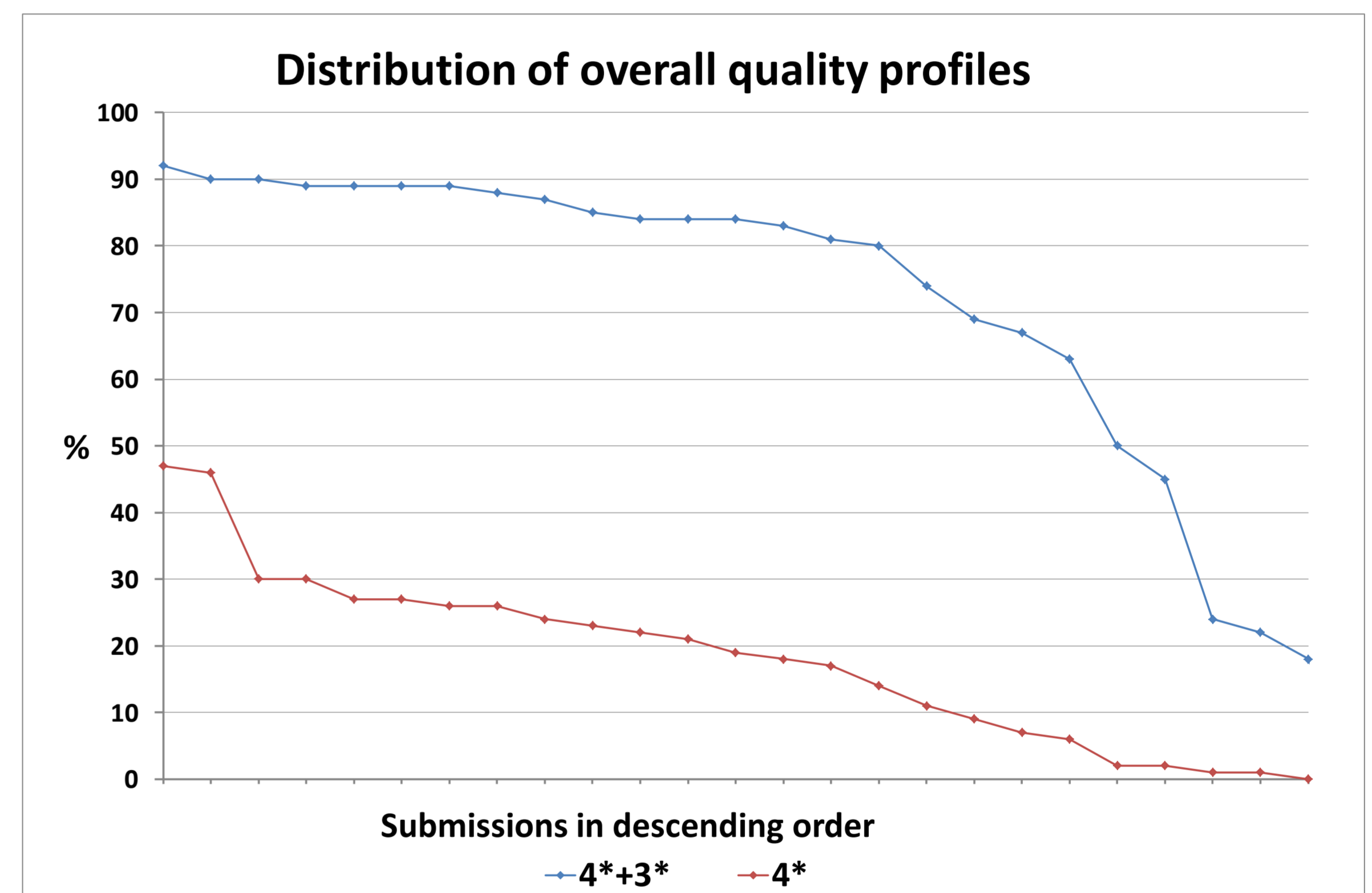
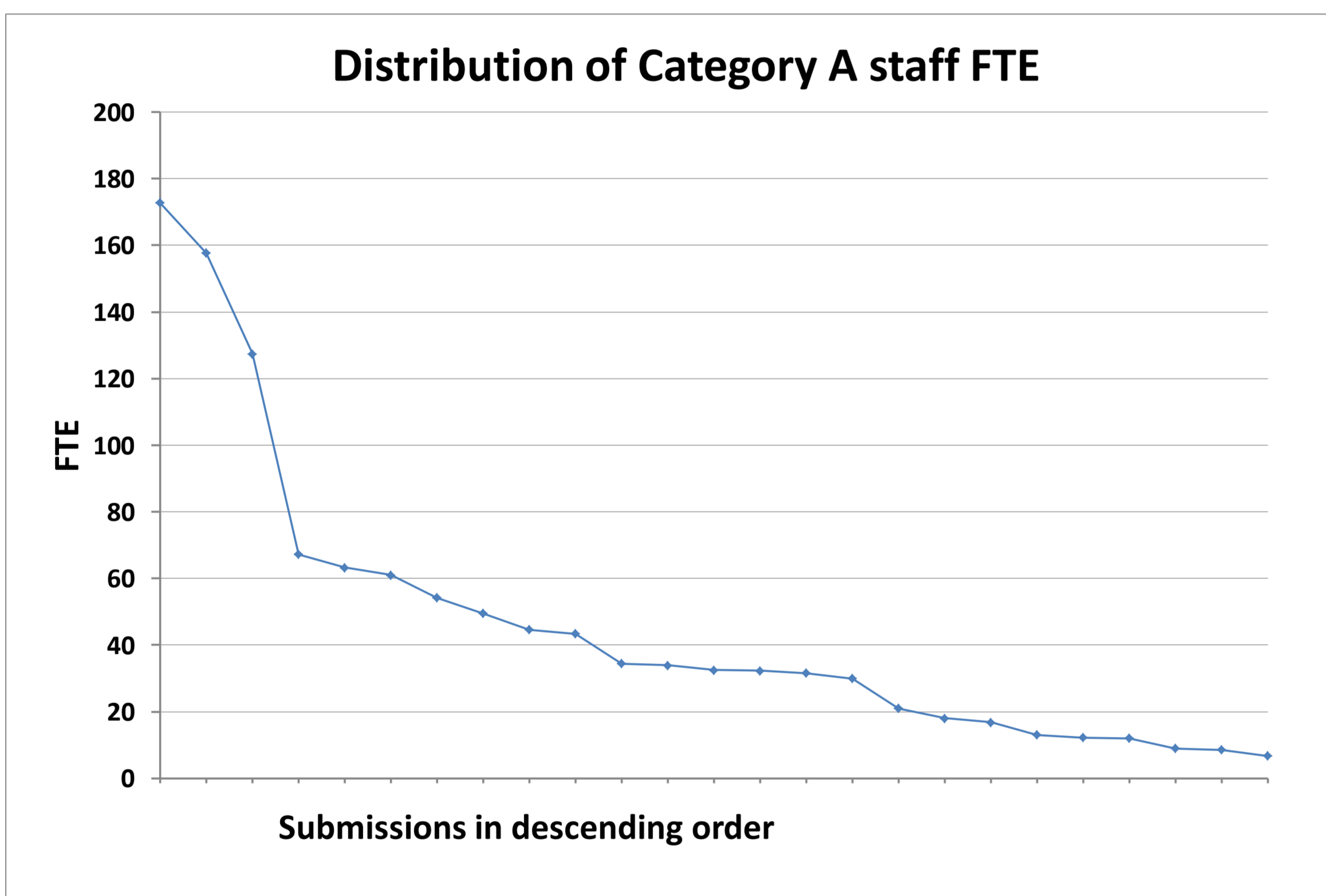
Total external research income, including income-in-kind (£M)				
2008-09	2009-10	2010-11	2011-12	2012-13
146.40	154.41	167.87	177.69	192.88



Average overall quality profile and average sub-profiles for all submissions in the UOA (FTE weighted)¹

	4*	3*	2*	1*	U/C
Overall	25	57	17	1	0
Outputs	18	60.4	20.7	0.8	0.1
Impact	38.4	47	13.9	0.7	0
Environment	36.8	55	6.4	1.6	0.2

Distribution of submission size and of the results in the UOA²



¹The rounding methodology described in Annex B of REF 02.2011, 'Assessment framework and guidance on submissions', has been used to produce the outcomes shown in the averages table.

The average overall quality profile and average sub-profiles have been adjusted for the number of Category A staff in each submission. Submissions with 3 or fewer staff (headcounts) are excluded from the calculation of the average sub-profiles.

²Each line in each chart below is plotted in descending order. As a result, the ordering of submissions in each chart -and the order of submissions shown on each line(4*+3* and 4*)- are not the same.